



Series 223H

4.7x3.5mm Compact Tactile Switch

- Surface mount gull-wing and J bend terminal configurations
- Compatible with IR reflow and manual soldering



Ordering Information

Series	Terminal Type	Actuating Direction	Actuator Height "L"	Actuator Force & Travel	Packaging	Boss	Ground Terminal																																				
223H	M	S	A	A	R	B	G																																				
	<table border="1"> <thead> <tr> <th>Code</th> <th>Spec.</th> </tr> </thead> <tbody> <tr> <td>M</td> <td>Surface mount gull wing</td> </tr> <tr> <td>J</td> <td>Surface mount J bend</td> </tr> </tbody> </table>	Code	Spec.	M	Surface mount gull wing	J	Surface mount J bend	<table border="1"> <thead> <tr> <th>Code</th> <th>Spec.</th> </tr> </thead> <tbody> <tr> <td>S</td> <td>Side</td> </tr> </tbody> </table>	Code	Spec.	S	Side	<table border="1"> <thead> <tr> <th>Code</th> <th>Spec.</th> </tr> </thead> <tbody> <tr> <td>A</td> <td>4.5mm</td> </tr> </tbody> </table>	Code	Spec.	A	4.5mm	<table border="1"> <thead> <tr> <th>Code</th> <th>Spec.</th> </tr> </thead> <tbody> <tr> <td>A</td> <td>160 gf, 0.25mm, white actuator</td> </tr> <tr> <td>B</td> <td>220 gf, 0.3mm, black actuator</td> </tr> </tbody> </table>	Code	Spec.	A	160 gf, 0.25mm, white actuator	B	220 gf, 0.3mm, black actuator	<table border="1"> <thead> <tr> <th>Code</th> <th>Spec.</th> </tr> </thead> <tbody> <tr> <td>R</td> <td>Tape & reel packaging</td> </tr> </tbody> </table>	Code	Spec.	R	Tape & reel packaging	<table border="1"> <thead> <tr> <th>Code</th> <th>Spec.</th> </tr> </thead> <tbody> <tr> <td>B</td> <td>With boss, black housing</td> </tr> <tr> <td>Blank</td> <td>No boss, white housing</td> </tr> </tbody> </table>	Code	Spec.	B	With boss, black housing	Blank	No boss, white housing	<table border="1"> <thead> <tr> <th>Code</th> <th>Spec.</th> </tr> </thead> <tbody> <tr> <td>G</td> <td>With ground terminal, only for boss option</td> </tr> <tr> <td>Blank</td> <td>No ground terminal</td> </tr> </tbody> </table>	Code	Spec.	G	With ground terminal, only for boss option	Blank	No ground terminal
Code	Spec.																																										
M	Surface mount gull wing																																										
J	Surface mount J bend																																										
Code	Spec.																																										
S	Side																																										
Code	Spec.																																										
A	4.5mm																																										
Code	Spec.																																										
A	160 gf, 0.25mm, white actuator																																										
B	220 gf, 0.3mm, black actuator																																										
Code	Spec.																																										
R	Tape & reel packaging																																										
Code	Spec.																																										
B	With boss, black housing																																										
Blank	No boss, white housing																																										
Code	Spec.																																										
G	With ground terminal, only for boss option																																										
Blank	No ground terminal																																										

Notes: Contact CTS for other common features not listed.

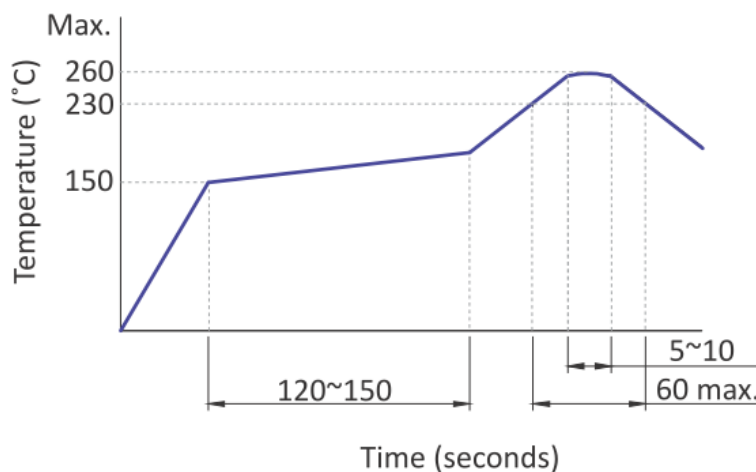
Electrical Specifications

Parameter	Conditions & Remarks	Min	Max	Unit
Contact Resistance			100	milliohms
Insulation Resistance	Between insulated terminals	100		Megohms
Dielectric Strength	1 minute between adjacent switches		250	VAC
Actuation Life	160 gf 220 gf		200,000 100,000	cycles
Nonswitching Rating			50 or 12	mA or VDC

Mechanical and Environmental

Soldering	Maximum reflow temperature, 260°C for 5 seconds Maximum manual temperature, 350°C for 3 seconds
RoHS	Lead-Free. Fully compliant to RoHS Directive 2011/65/EU
Operating Force	160±50 gf 220±50 gf
Actuator Strength	3 Kgf maximum
Travel	0.25±0.1 mm 0.3 ^{+0.1} _{-0.2} mm
Packaging	Standard tape and reel packaging
Operating Temperature Range	-40°C to +85°C
Storage Temperature Range	-40°C to +85°C

Soldering Profile



Mechanical Specifications

Figure 1 –223HM... Surface Mount Gull Wing, Without Ground Terminal

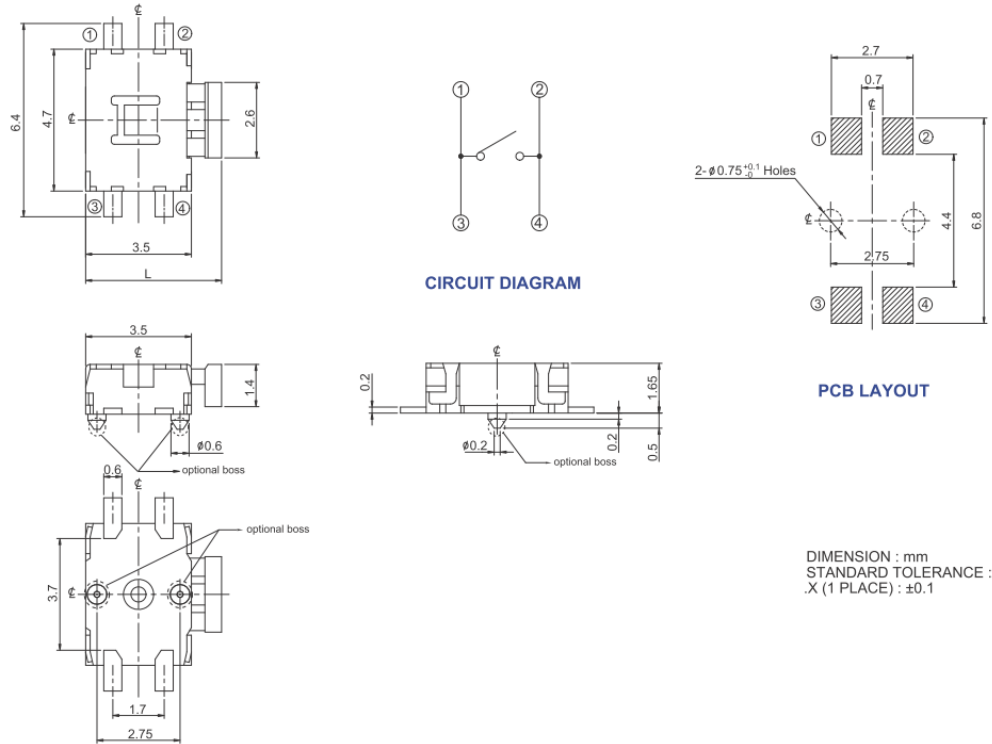


Figure 2 –223HM...G Surface Mount Gull Wing, With Ground Terminal

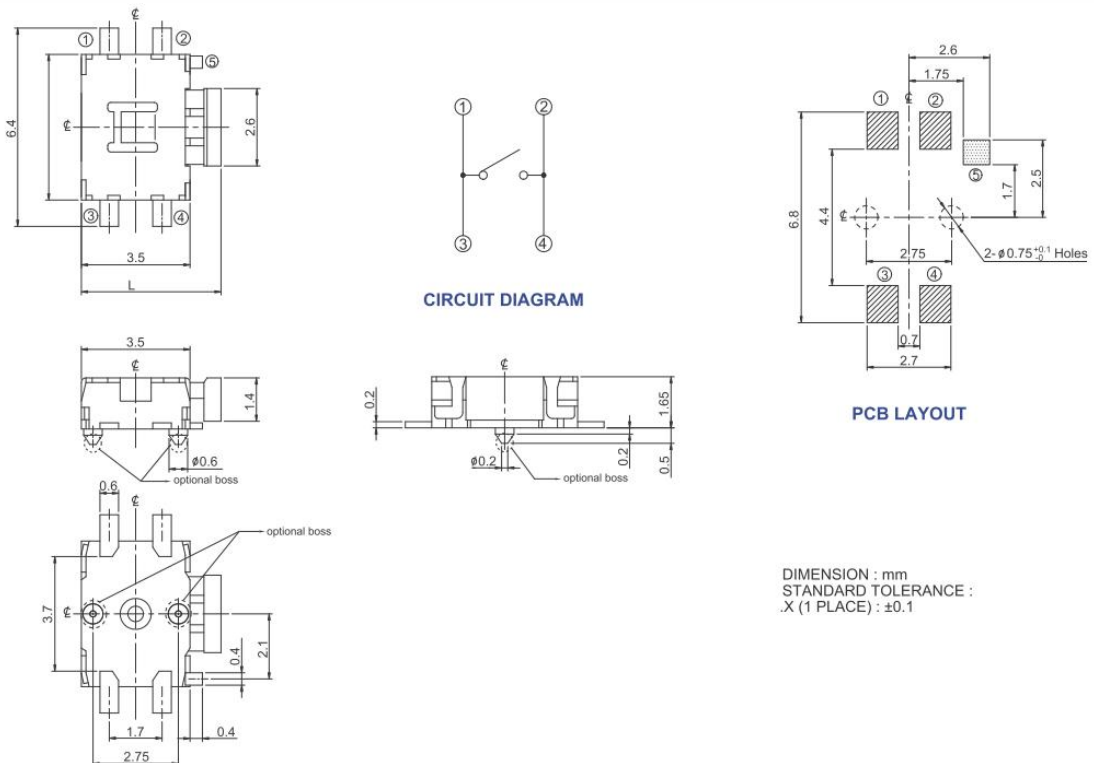


Figure 3 –223HJ... Surface Mount J Bend, Without Ground Terminal

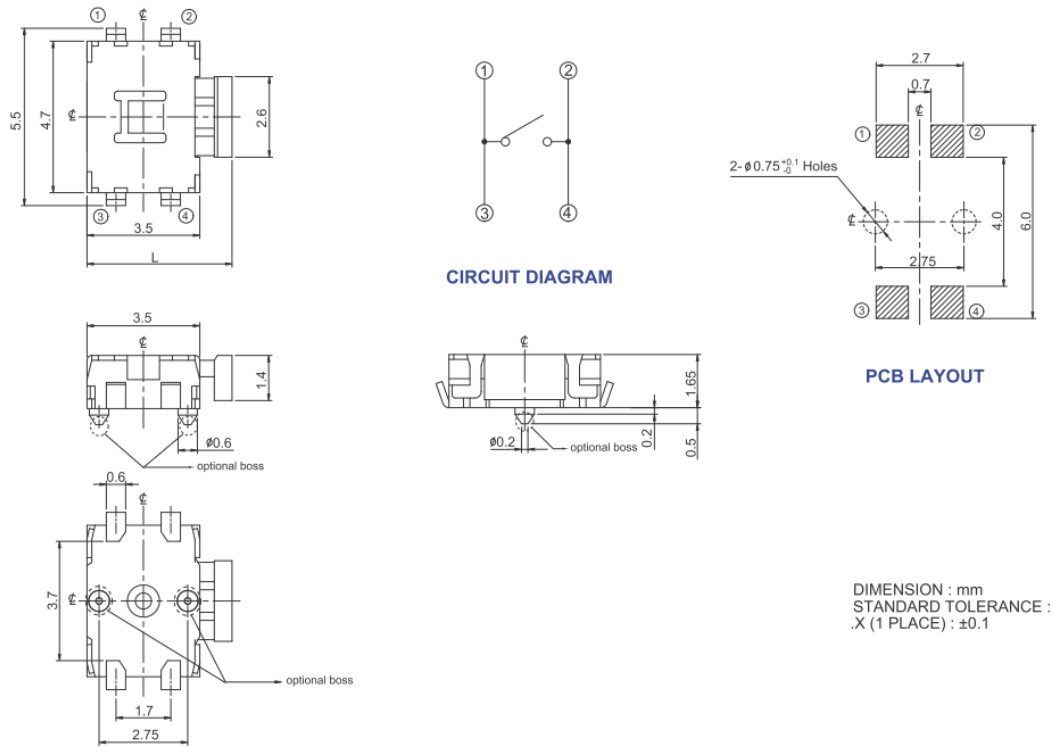
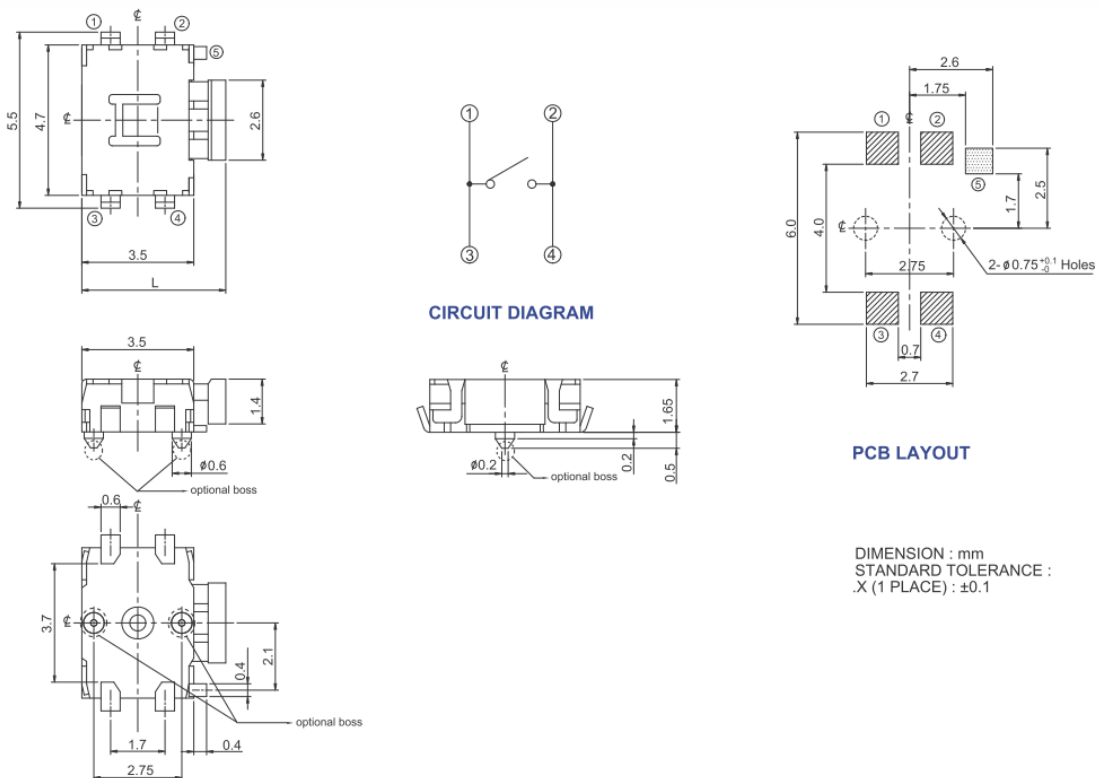


Figure 4 –223HJ...G Surface Mount J Bend, With Ground Terminal

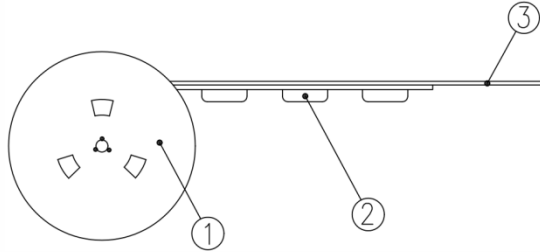


Packing: Tape and Reel

Surface Mount Gull Wing/J Bend

The packing specifications :

Structure and materials :



③	COVER TAPE	POLYESTER
②	CARRIER TAPE	POLYSTYRENE
①	REEL	POLYSTYRENE
NO.	PARTS NAME	MATERIALS

1. Packing quantity : 3,300 pcs/reel
2. More than 10 empty pockets should remain at each end of the carrier tape for each reel.
3. Shortage less than 10 pcs a reel is acceptable but no more than 3 consecutive empty pockets are allowed.
4. Stripping strength of cover tape is between 10 gf to 70 gf and stripping angle should be within 165°~180°.
5. The product in the pocket of carrier tape should be placed in a specified correct position.
6. Tape and reel per EIA-481
7. Dimensions :

