

PCB Mount Current Sensor



**Non-Intrusive Current Sensing
for PCB Power Applications**

PCB Mount Current Sensor

CTS-CS-PAX-12

Product Features

- Designed for PCB Systems
- Open Loop Hall-Effect
- Non-Intrusive Sensing
- Current Range up to ± 1000 A
- AC & DC Compatible
- Low Hysteresis, High Permeability
- High Accuracy & Linearity
- Small Size & Lightweight
- Fully Ratio-Metric
- Off-the-Shelf & Custom Solutions

Ideal Applications

- High-Power PCB Systems
- Industrial Inverter Modules
- Solar Panels/Photovoltaics
- High-Power Inverters
- DC/DC Converters
- Power Supply Units

Technical Specifications

Parameter	Value	Unit
Current Range	± 250 , ± 500 , ± 750 , ± 1000	A
Sensitivity	8.00, 4.00, 2.67, 2.00	mV/A
Linearity Error	± 1	%
Supply Voltage	5 (± 0.5)	V
Output Quiescent Voltage	2.5	V
Frequency Bandwidth	>30	kHz
Operating Temperature	-40 to 125	$^{\circ}\text{C}$
Conductor \varnothing	12.5	mm

Scan to learn more



www.ctscorp.com

cts

Busbar Mount Current Sensor



**Non-Intrusive Current Sensing
for High-Power Applications**

Busbar Mount Current Sensor CTS-CS-BAX-20

Product Features

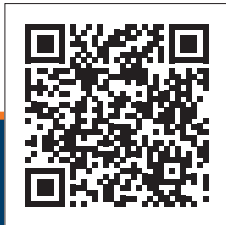
- Busbar System Integration
- Open Loop Hall-Effect
- Non-Intrusive Sensing
- Current Range up to ± 1500 A
- AC and DC Compatible
- Low Hysteresis, High Permeability
- High Accuracy & Linearity
- -40 to 125°C Temperature Range
- Small Size & Lightweight
- Off-the-Shelf & Custom Solutions

Ideal Applications

- Automotive Inverters
- DC Bus Links
- DC/DC Converters
- High-Power Industrial Equipment

Technical Specifications		
Parameter	Value	Unit
Current Range	$\pm 250, \pm 500, \pm 1000, \pm 1500$	A
Sensitivity	8.00, 4.00 2.00, 1.33	mV/A
Linearity Error	± 1	%
Supply Voltage	5 (± 0.5)	V
Output Quiescent Voltage	2.5	V
Frequency Bandwidth	>40	kHz
Operating Temperature	-40 to 125	°C
Dimensions	6 x 20.5	mm

Scan to learn more



www.ctscorp.com



Clamp-On Current Sensor



**Easily Installable
Non-Intrusive Current Sensing**



Clamp-On Current Sensor Module

CTS-CS-CAX-12

Product Features

- Clamp-On Design
- Contactless Open Loop Hall-Effect
- Low Hysteresis, High Permeability
- High Accuracy & Linearity
- IMC-Hall® Planar Sensor
- AC & DC Compatible
- Snap-Fit PCB Installation
- Small Size & Cost-Effective

(Also Available w/o Sensor as Magnetic Field Concentrator)

Ideal Applications

- Industrial Preventative Maintenance
- Lift & Escalator Inverters
- IoT
- Solar Panels/Photovoltaics
- E-Metering
- Automated Doors

Technical Specifications

Parameter	Value	Unit
Current Range	$\pm 25, \pm 50, \pm 75, \pm 100, \pm 200$	A
Conductor \varnothing	4, 10	mm
Accuracy	± 1	%
Supply Voltage	5 (± 0.5)	V
Output Quiescent Voltage	2.5	V
Frequency Bandwidth	>30	kHz
Operating Temperature	-40 to 85	$^{\circ}\text{C}$

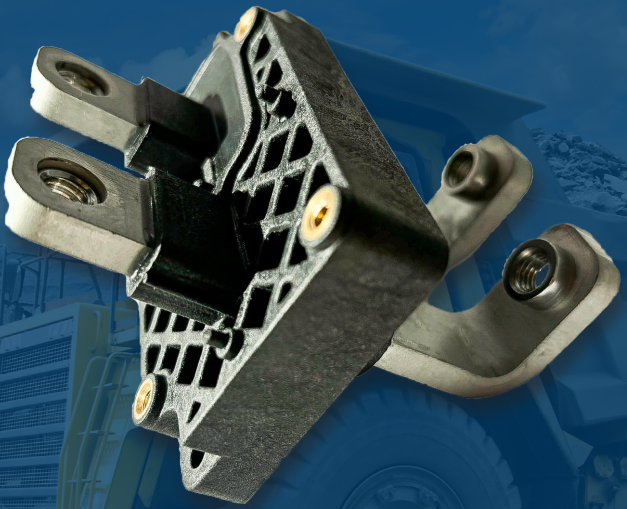
Scan to learn more



www.ctscorp.com

cts

Custom-Made Current Sensor



Custom Current Sensor Module
for Heavy Duty Vehicles

Custom Current Sensor Module

Product Features

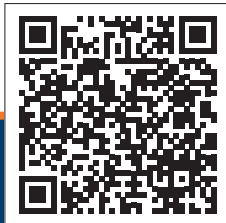
- Heavy Duty Traction Inverter
- Very High Current Range
- Reconfigurable Gain/Offset
- Electronics Included
- Harsh Environment Protection
- High Bandwidth
- Full Custom Module Designs
- Custom-Made Sub-Assemblies

Ideal Applications

- Heavy Duty Vehicles
- Power Distribution Systems
- Smart Junction Boxes
- Grid Infrastructure / Transformers
- Solar Power
- Harsh Environment Equipment

Technical Specifications		
Parameter	Value	Unit
Current Range	±2000	A
Sensitivity	4.74	mV/A
Linearity Error	<1	% N _{LE}
Thermal Offset Drift	±20 (FS Output of 9500 mV)	mV
Supply Voltage	±13	V
Frequency Bandwidth	≥40	kHz
Operating Temperature	-40 to 125	°C

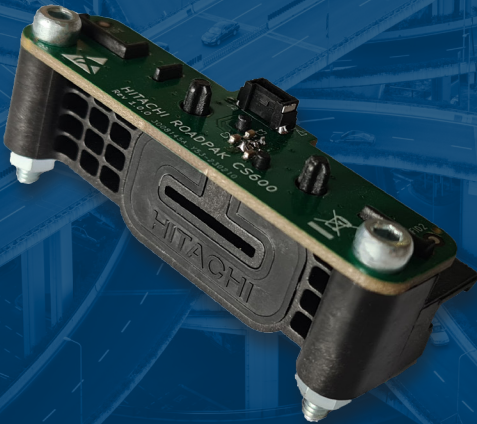
Scan to learn more



www.ctscorp.com



Custom-Made Current Sensor



Custom Current Sensor Module
for Traction Inverters

Custom Current Sensor Module

Product Features

- Non-Intrusive Measurements
- Ultra Compact
- Low Hysteresis
- High Permeability
- Plug & Play in Hitachi RoadBak
- Inverter Specific
- Improving Pressfit Alignment

Ideal Applications

- Automotive Traction Inverters
- DC Bus Links
- Compact Industrial Inverters
- DC/DC Converters

Technical Specifications		
Parameter	Value	Unit
Current Range	$\pm 600, \pm 850, \pm 1200$	A
Sensitivity	3.33	mV/A
Linearity Error	<1	% N_LE
Thermal Offset Drift	<5	mV
Operating Temperature	-40 to 125	°C

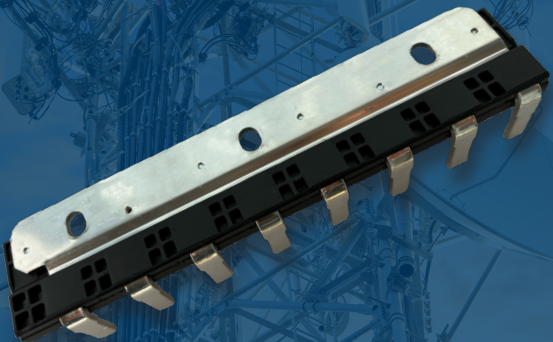
Scan to learn more



www.ctscorp.com



Custom-Made Current Sensor



Custom Current Sensor Module
for Telecom Applications



Custom Current Sensor Module

Product Features

- Multichannel Device
- Daisy Chaining Support
- Plug & Play
- Electronics Included
- Ultra Compact
- Integration of Multiple Units
- Full Custom Module Designs
- Custom-Made Sub-Assemblies

Ideal Applications

- Data Centers
- Power Distribution Systems
- Smart Junction Boxes
- Telecom Current Monitoring
- Solar Power

Technical Specifications		
Parameter	Value	Unit
Channels	8, 12	-
Current Range (8)	±125 Peak/Channel	A
Current Range 12	±65 Peak/Channel	A
Sensitivity	Fully Digital	-
Linearity Error	<1	% N_LE
Operating Temperature	-40 to 85	°C

Scan to learn more



www.ctscorp.com



Custom-Made Current Sensor



Custom Current Sensor Module
for Automotive Inverters

Custom Current Sensor Module

Product Features

- 3 Phase Open Loop Hall-Effect
- Non-Intrusive AC Sensing
- Current Range up to 900 A
- Unipolar 5 VDC Power Supply
- High Accuracy & Linearity
- Low Hysteresis, High Permeability
- Wide Temperature Range
- High Bandwidth

Technical Specifications		
Parameter	Value	Unit
Current Range	±900	A
Sensitivity	±2.22	mV/A
Thermal Offset Drift	±5	mV
Thermal Sensitivity Drift	±1	%
Frequency Bandwidth	>40	kHz
Operating Temperature	-40 to 125	°C

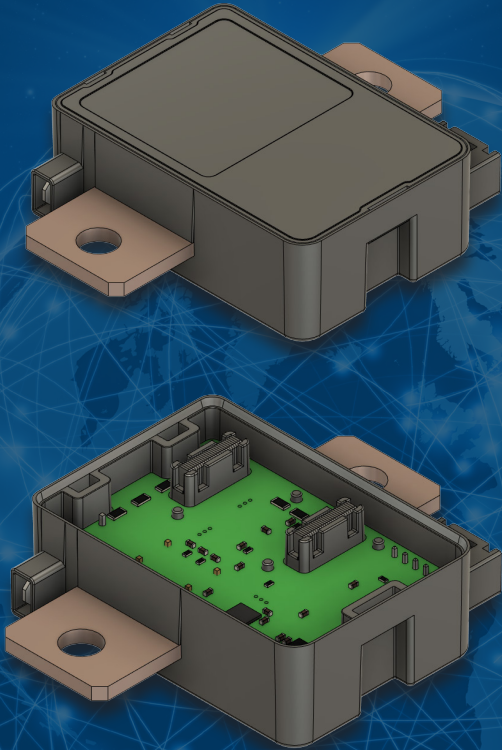
Scan to learn more



www.ctscorp.com



Custom-Made Current Sensor



**Custom Current Sensor Module
for Hall and Shunt Measurement**

Custom Current Sensor Module

Product Features

- Redundant Hall and Shunt
- Very High Current Range
- Modular Design
- CAN-BUS Communication
- High Voltage w/ Galvanic Isolation
- Current & Voltage Measurement
- High Accuracy
- Reverse Polarity Protection
- Small Size / Lightweight

Ideal Applications

- Industrial
- Smart Grid
- Automotive

Technical Specifications

Parameter	Value	Unit
Current Range	± 2000	A
Voltage Range	± 5 to ± 800	V
Supply Voltage	7 to 16	V
Accuracy	± 0.1	%
Redundant Measurement Shunt	18	Bits
Redundant Measurement Hall	12	Bits
Operating Temperature	-40 to 80	$^{\circ}\text{C}$

Scan to learn more



www.ctscorp.com

