

Series 576

Industrial Conductive Plastic Precision Rotary Sensor

- Robust Construction
- Precision Center Voltage
- Center Return Mechanism
- 2 Million Cycle Life
- Flexible Mechanical Installation
- Water Resistance (IP64)
- RoHS compliant



Description

The 576 Series robust construction provides the user with a easy to use, highly reliable precision product. As a standard, the 576 series is supplied with solder lug terminals. Options include various shaft lengths, resistance tolerances, and 2 or 4 mounting ear options to meet your design requirements.

Ordering Information

Series	Mounting Ear		Shaft Length "L"		Drive Plate Mounting Hole Pitch		Drive Plate Direction	
576	D	D	1		A	A		S
	↓		↓		↓		↓	
Code	Spec.		Code	Spec.	Code	Spec.	Code	Spec.
D	2-Ear (Metal)		1	20mm	T	Toward mounting plate (4-Ear only)	S	Standard (1.7 kgf-cm)
Q	4-Ear (Metal)		N	N/A (Stop plate)	A	Away from mounting plate (2-Ear only)	H	High (3.0 kgf-cm)
E	2-Ear (Plastic)				N	N/A (Stop plate)		
	↓							
	Code		Spec.				Code	Spec.
	Drive Plate Style						A	±10%
	D Default shaft length						B	±20%
	Metal Stop Plate Style							
	1 30mm							
	2 40mm							
	3 50mm							
	Plastic Stop plate Style							
	P Die Cast 30mm							
	S Stainless Steel 30mm							

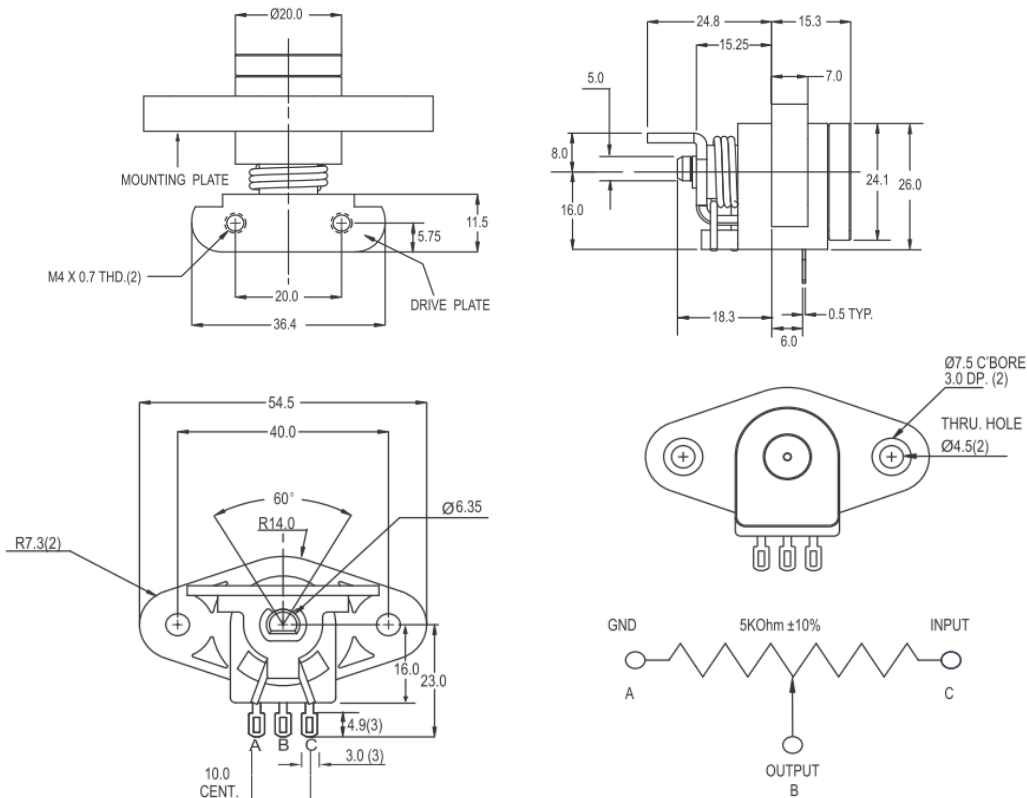
Electrical Specifications

Parameter	Conditions & Remarks	Min	Max	Unit
Operating Temperature Range		-10	+85	°C
Storage Temperature Range		-40	+125	°C
Overall Resistance			5K	ohms
Resistance Tolerance	±20%, ±10%,			
Dielectric Strength	1 minute		500	VDC
Power Rating	40°C		0.2	watts
Operating Voltage			5	VDC
Rotational Life	576D/Q 576E		2 Million 1.5 Million	cycles
Insulation Resistance	500 VDC	1000		Mega-ohms

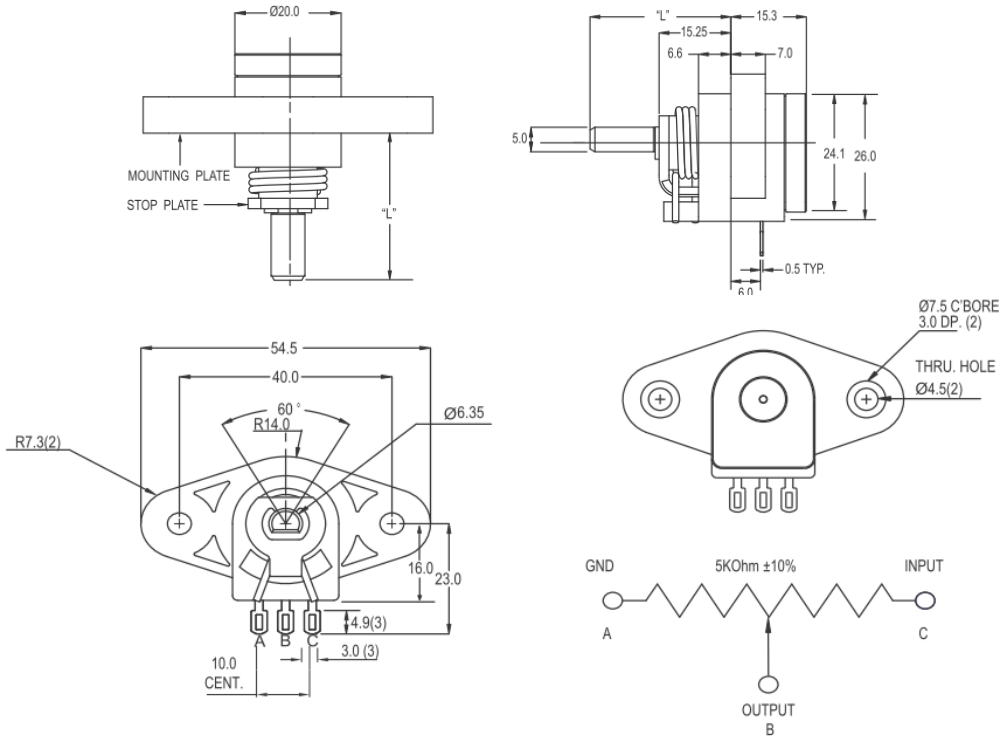
Mechanical and Environmental

Connection Mechanism	Flatted shaft, Drive plate
Mounting Information	2-Ear, 4-Ear
Water Resistance	IP64
Rotational Torque	54~432 gf-cm
Mechanical Angle	With rotary switch: 320 degrees max. Without switch or with push switch: 300 degrees max.
Starting Torque	Standard: 1.7 kgf-cm max. High: 3.0 kgf-cm max.
Stop Strength	100 kgf-cm max.
Push-Pull Strength of Shaft	12.7 kg max. for 10 seconds
Reflow Soldering	Maximum temperature of 350°C for 5 seconds
RoHS	Lead-Free. Fully compliant to RoHS Directive
Packaging	Standard sample box packaging

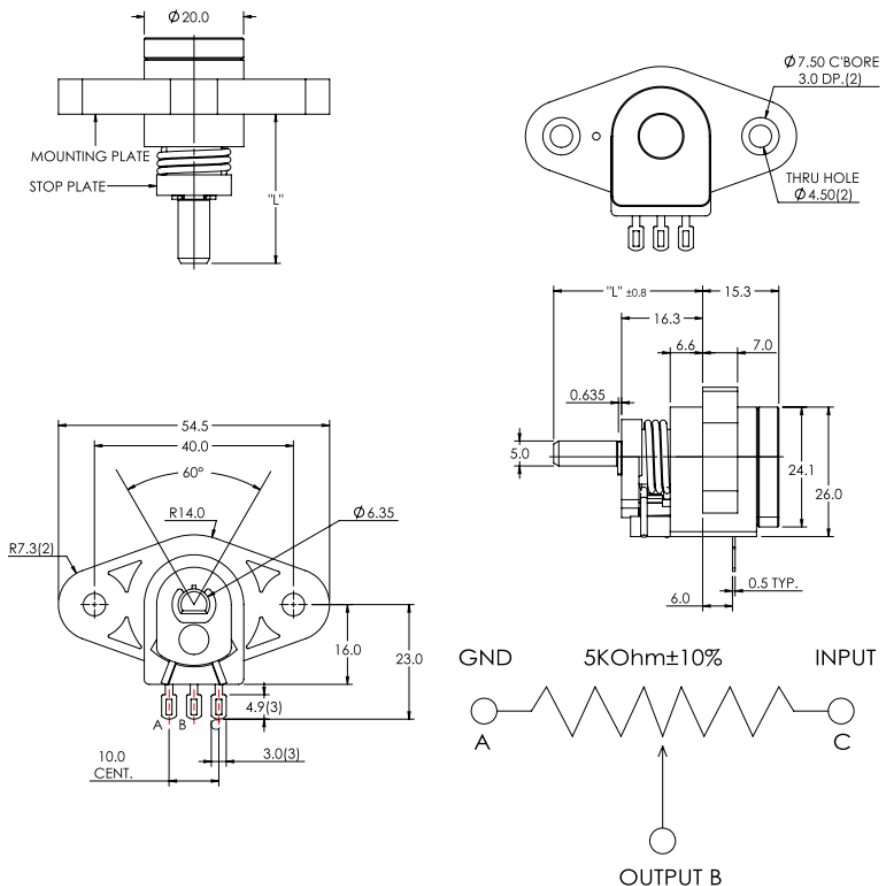
576D Drive Plate Pointing away from Mounting Plate, 2-Ear Mounting, Solder Lug Terminal



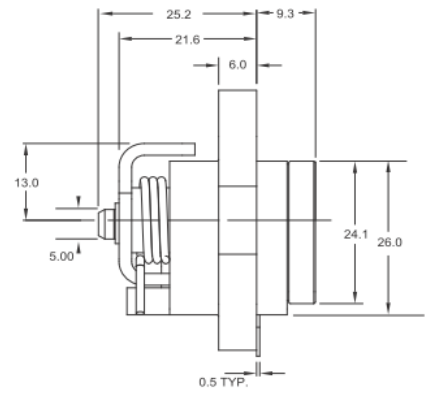
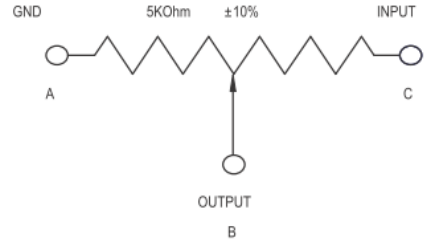
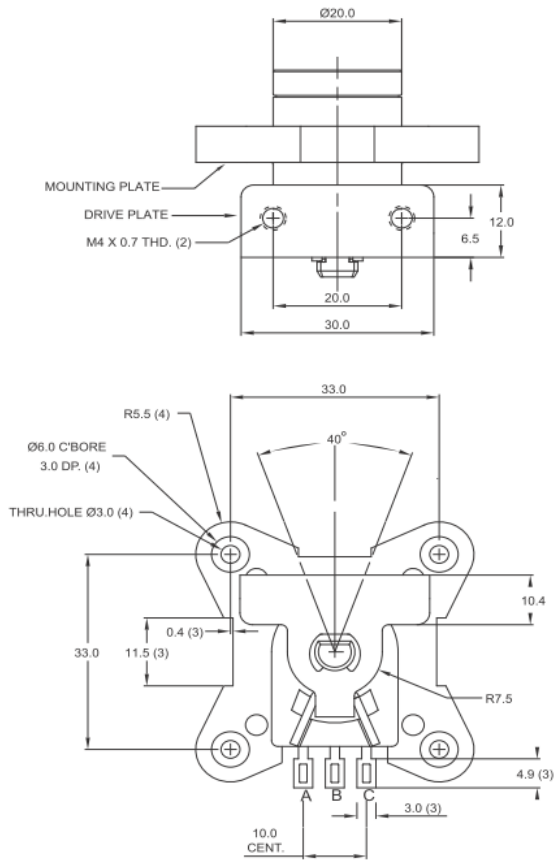
576D Stainless Shaft with Stop Plate, 2-Ear Mounting, Solder Lug Terminal



576E with plastic stop plate, 2-Ear Mounting. Solder Terminal

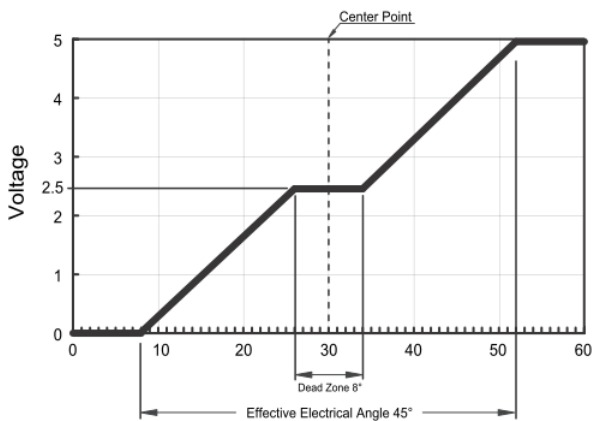


576Q Drive Plate Pointing toward Mounting Plate, 4-Ear Mounting, Solder Lug Terminal



Resistance Tapers

576D (2-Ear Mounting)



576Q (4-Ear Mounting)

