

Features

- Low Tx Insertion Loss
- Excellent Tx Isolation
- 4 mm Board Height

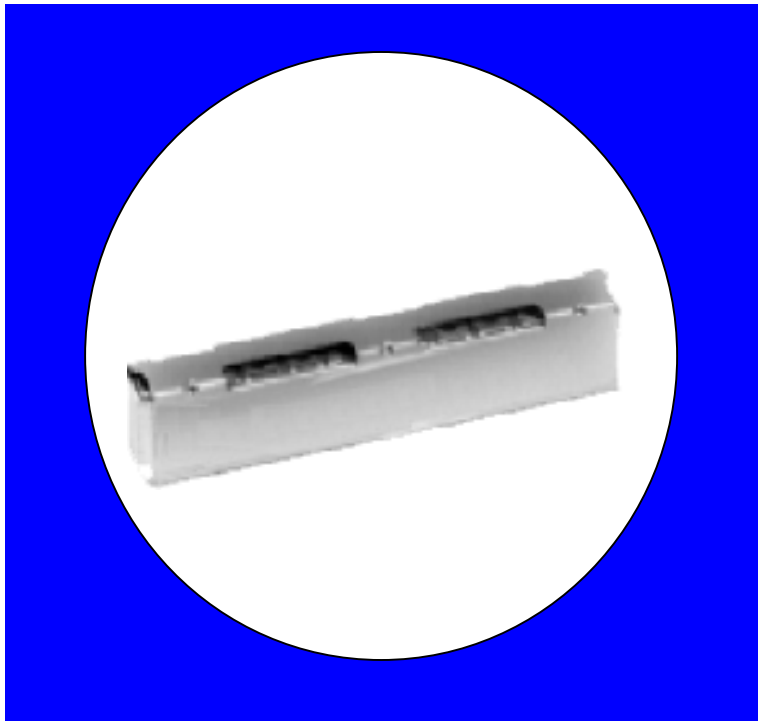
Description

Surface mount, silver (Ag) coated ceramic duplexer. Developed for in PCS infrastructure and subscriber applications

Weight: 3.065 grams typical

Material: Filter is composed of a ceramic block plated with Ag and a shield made of nickel silver plated steel.

Filter complies with RoHS standards.



Electrical Specifications

Parameter	Frequency (MHz)	Typical @ 25°C	Spec @ 25°C	Spec. over -40°C to +85°C
TX to Antenna Response				
Passband Insertion Loss	1850-1910	3.4 dB	3.6 dB max	3.85 dB max
Passband Return Loss	1850-1910	12.0 dB	10 dB min	9.0 dB min
Rejection @ RX band	1930-1990	38.0 dB	37dB min	35.0 dB max
Ripple	1850-1910	2.7 dB	3.0 dB max	3.2 dB max
Antenna to RX Response				
Passband Insertion Loss	1930-1990	3.9 dB	4.2 dB max	4.55 dB max
Passband Return Loss	1930-1990	12.0 dB	10 dB min	9.0 dB min
Rejection @ TX band	1850-1910	58.0 dB	55 dB min	53.0 dB min
Ripple	1930-1990	2.8 dB	3.0 dB max	3.3 dB max
TX to RX Response				
Rejection @ RX band	1930-1990	40.0 dB	39 dB min	37 dB min
Rejection @ TX band	1850-1910	59 dB	56 dB min	54 dB min

Note: Supplier shall test each filter to the critical electrical specifications of the above table. Any subsequent audits may deviate from in value due to measurement repeatability among different test systems. Such deviations shall not exceed the following limits:

Specification Allowance	
Insertion Loss	0.1 dB
Return Loss	1.0 dB
Stopbands	1.0 dB

*This product is covered by one or more of the following U.S. and foreign patents including: US 4,692,726;US 4,742,562; US 4,800,348;US 4,829,274;US 5,146,193;EP 0573597;DE 0573597;FR 0573597;JP 508149/92;KR 142171;US 5,162,760;US 5,218,329;US 5,250,916;US 5,327,109;US 5,488,335;CA 2114029;FR 9306297;GB 2273393;JP 3205337;KR 115113;CN 93106228.4;US 5,512,866;EP 0706719;DE 0706719;FR 0706719;GB 0706719;CN 95190359.4;US 5,602,518;US 5,721,520;US 5,745,018;EP 0910875;DE 0910875;DK 0910875;FR 0910875;GB 0910875;IE 0910875;JP 505182/98;KR 10-323013;US 5,994,978;US 6,462,629;CN 00810420.4;US 6,559,735;US 6,650,202;US 6,834,429. Other US and foreign patents pending.

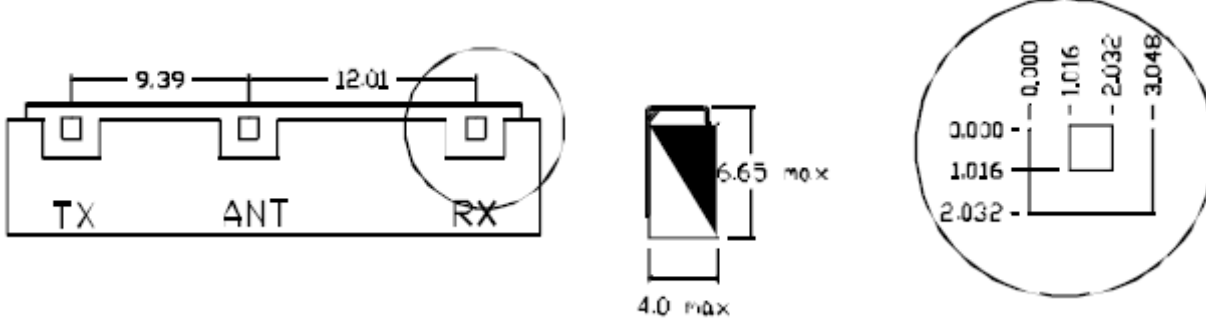
CTS Corporation 2006 reserves all copyrights in the layout, design and configuration of the patterns on this product.

Mechanical Drawing

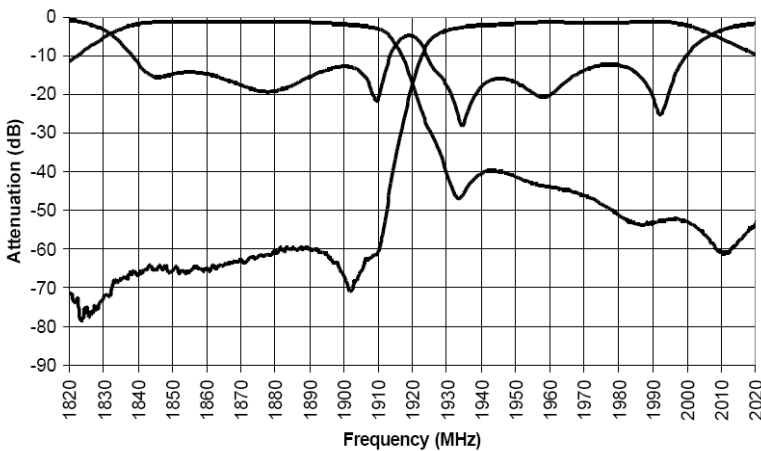
2.3 Mechanical Outline

2.3.1 All dimensions in mm

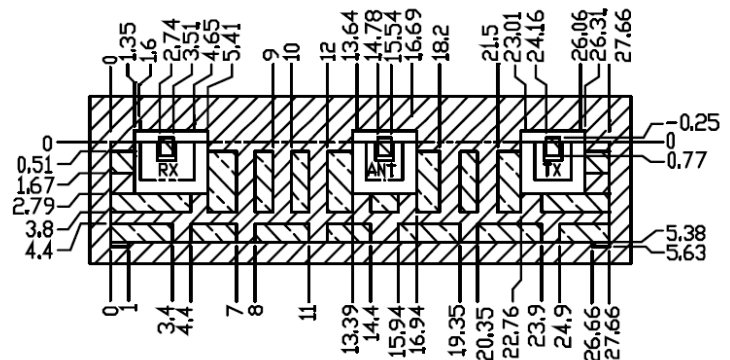
2.3.2 All tolerances are +/- 0.13 mm unless otherwise specified.



Electrical response



PCB Layout



DIMENSIONS ARE IN MM, TOLERANCES = ±0.13

- FILTER OUTLINE
- SOLDER RESIST OVER DIELECTRIC
- SOLDER RESIST OVER CONDUCTOR
- EXPOSED CONDUCTOR

Packaging and Marking

DIMENSION	UNITS	SPECIFICATION
REEL DIAMETER	mm	330
REEL WEIGHT	kg	2.4
REEL QUANTITY	ea.	500

